

Operating Temperature:

-55°C to +125°C

Operating Voltage:

200 VDC, 125 VAC, 400 Hz

Peak Transient Voltage:

600 VDC (10µsec) @ +25°C.

Dielectric Strength:

400 VDC @ +25°C, 50 mA maximum charging current.

Insulation Resistance:

100 megohms minimum with 200 VDC, 50 mA maximum charging current, @ +25 after 2 minutes.

Insertion Loss:

At -55°C to +125°C, the insertion loss will decrease a maximum of -3 dB from the +25°C value.

Military Specifications:

Meets or exceeds the applicable parameters of MIL-PRF-15733 and MIL-PRF-28861.

Housing (Hermetically Sealed):

Electro-tin-lead plated, hot solder dipped, or as specified.

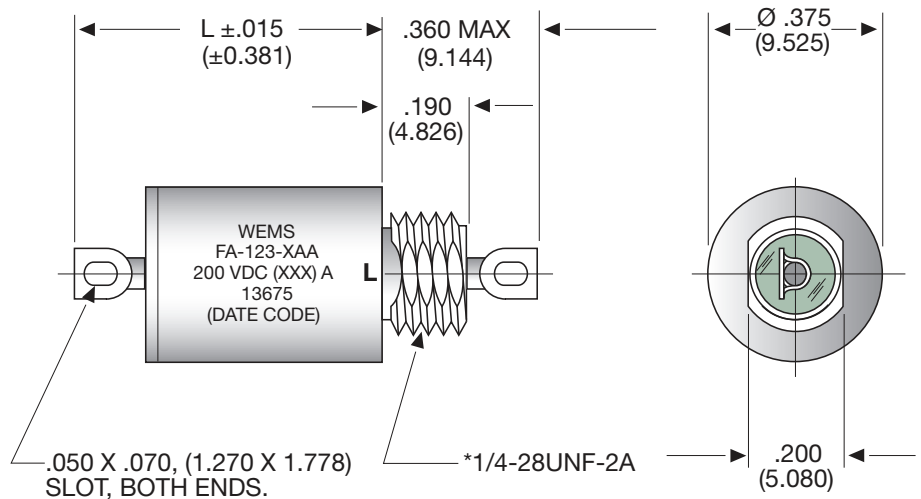
Recommended Torque:

48 inch/oz. maximum.

Marking:

WEEMS, part number, Federal Code identification, voltage, current and date code.

High Performance (200 VDC, 125 VAC, 400 Hz Applications)



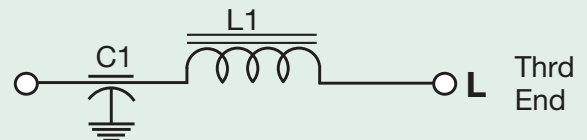
Tolerance: ± .010 (±.254 mm) unless otherwise specified.

*All units supplied with internal tooth lockwasher and hex nut.

For further details see page 6.

Dimensions are inches (mm in parantheses).

“L” Type Network
200 VDC



PART NUMBER	CURRENT DC MAX. (AMPERES)	RESISTANCE DC MAX. (Ω)	DIMENSION L INCHES (mm)	MINIMUM INSERTION LOSS (Db) At +25°C IN ACCORDANCE WITH MIL-STD-220 ^{1,2}						
				30 kHz	150 kHz	300 kHz	1.0 MHz	10 MHz	100 MHz	1.0 GHz
FA-123-AAA	0.06	7.00	.721 (18.313)	31	59	70	70	70	70	70
FA-123-BAA	0.15	3.00	.721 (18.313)	22	50	62	70	70	70	70
FA-123-CAA	0.25	2.90	.721 (18.313)	15	43	55	70	70	70	70
FA-123-FAA	0.5	0.65	.721 (18.313)	8	30	38	53	70	70	70
FA-123-GAA	1.00	0.36	.721 (18.313)	7	23	31	50	70	70	70
FA-123-HAA	2.00	0.12	.721 (18.313)	7	20	27	43	70	70	70
FA-123-JAA	3.00	0.04	.721 (18.313)	7	20	26	39	70	70	70
FA-123-KAA	5.00	0.007	.721 (18.313)	7	20	26	37	63	70	70
FA-123-LAA	10.00	0.005	.721 (18.313)	7	20	26	37	50	70	70
FA-123-MAA	15.00	0.0025	.721 (18.313)	7	20	26	37	50	70	70

¹ Insertion loss measurements shall be made under full load over the frequency range of 1.0 MHz to 10 MHz. Insertion loss measurements above this frequency range under no load.

² The insertion loss requirements between any two adjacent specified frequencies shall be that of the lower of the two frequencies in order to accommodate resonant dips.

* Part numbers are specified for the thread on the inductor end. For a reverse type network, capacitor at threaded end, the filter numerical part number should be specified as 2, eg FA-223-XAA, (see page 6 for part numbering systems).