

**Operating Temperature:**

-55°C to +125°C

**Operating Voltage:**

250/440 VAC 50/60 Hz

**Dielectric Strength:**

For 240 VAC; 800 VDC @ +25°C,  
50 mA maximum charging current.

**Insulation Resistance:**

100 megohms minimum with 100 VDC,  
50 mA maximum charging current,  
@ +25 after 2 minutes.

**Insertion Loss:**

A minimum insertion loss of 60 dB at  
150 kHz and 80 dB over the frequency  
range from 0.50 MHz through 1.0 GHz.

**Housing (Hermetically Sealed):**

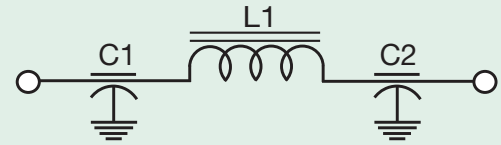
Electro-tin-lead plated, hot solder  
dipped, or as specified.

**Marking:**

WEEMS, part number, Federal Code  
identification, voltage, current and  
date code.

## High Performance (250/440 VAC 50/60 Hz Applications)

$\pi$  Type Network  
250 VAC  
440 VAC  
50/60 Hz



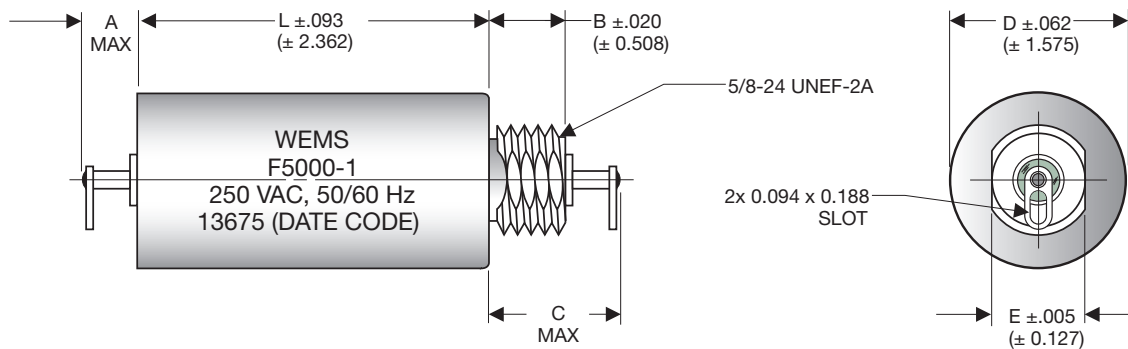
Tolerance:  $\pm .010$  ( $\pm .254$  mm) unless otherwise specified.

\*All units supplied with internal tooth lockwasher and hex nut.

For further details see page 6.

Dimensions are inches (mm in parantheses).

**FIG 1**



**FIG 2**

