

**Operating Temperature:**

-55°C to +125°C

**Operating Voltage:**

50 VDC, 100 VDC, 200 VDC,  
125 VAC, 400 Hz

**Rated Current:**

15 Amperes maximum

**Peak Transient Voltage:**

(10µsec) @ +25°C.

**Dielectric Strength:**

Twice DC Operating Voltage @ +25°C,  
50 mA maximum charging current.

**Insulation Resistance:**

Measured with 100 VDC or the  
operating voltage, whichever is less,  
50 mA maximum charging current,  
@ +25 after two minutes.

**Insertion Loss:**

At -55°C to +125°C, the insertion loss  
will decrease a maximum of -3 dB  
from the +25°C value.

**Military Specifications:**

Meets or exceeds the applicable  
parameters of MIL-PRF-15733 and  
MIL-PRF-28861.

**Housing (Hermetic or Epoxy Seal):**

Electro-tin-lead plated, hot solder  
dipped, or as specified.

**Recommended Torque:**

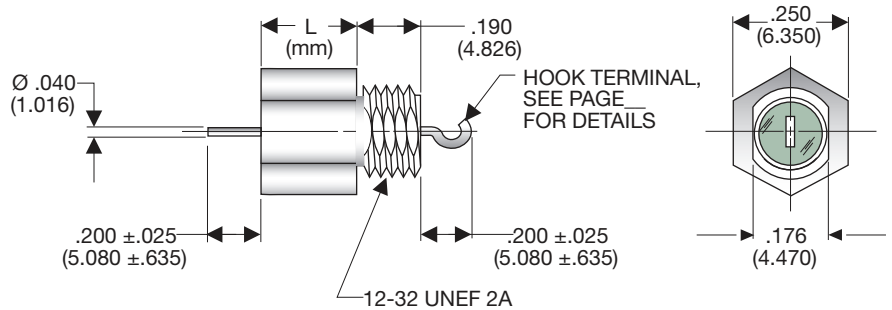
Per page 6.

**Marking:**

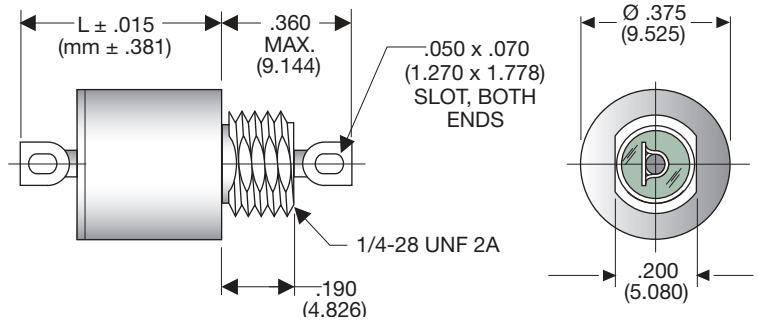
WEMS, part number, Federal Code  
identification, voltage, current and  
date code.

## AC / DC Applications

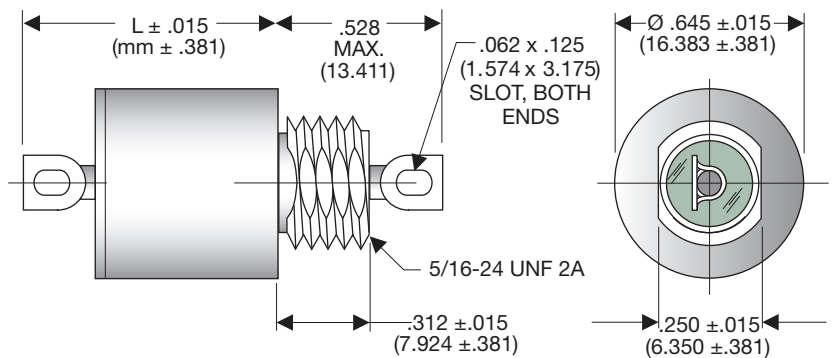
**FIG 1 Epoxy Seal**



**FIG 2 Hermetic Seal**



**FIG 3 Hermetic Seal**



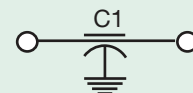
Tolerance:  $\pm .010$  ( $\pm .254$  mm) unless  
otherwise specified.

\*All units supplied with internal tooth  
lockwasher and hex nut. For further  
details see page 6.

Dimensions are inches (mm in  
parantheses).

Part numbers listed on following page.

"C" Type Network





## AC / DC Applications

PART NUMBER*	CAPACITANCE μF +100%, - 0%	WORKING VOLTAGE		INSULATION RESISTANCE MEGOHMS, MIN.	PEAK TRANSIENT VOLTAGE (10μSEC)	L DIMENSION INCHES (mm)	FIG	MINIMUM INSERTION LOSS (Db) At +25°C IN ACCORDANCE WITH MIL-STD-220 <sup>1 2</sup>						
		DC VOLTS	AC 0-400Hz					50 kHz	100 kHz	150 kHz	300 kHz	1 MHz	10 MHz	1.0 GHz
FA-502-MAA	0.35	50	-	1400	150	.345 (8.763)	1	7	10	16	22	32	50	65
FA-502-MAB	0.70	50	-	700	150	.345 (8.763)	1	15	20	24	30	40	57	65
FA-502-MAC	1.40	50	-	350	150	.345 (8.763)	1	19	25	28	35	45	60	65
FA-513-MAA	0.50	100	-	1000	300	.420 (10.668)	2	10	16	19	25	36	55	65
FA-513-MAB	1.00	100	-	500	300	.520 (13.208)	2	16	21	25	31	41	60	65
FA-523-MAA	0.125	200	125	1500	600	.420 (10.668)	2	-	-	8	12	21	43	65
FA-523-MAB	0.25	200	125	1500	600	.520 (13.208)	2	6	12	14	20	30	50	65
FA-523-MAC	0.375	200	125	1300	600	.590 (14.986)	2	8	13	17	23	34	52	65
FA-506-MAA	4.00	50	-	120	150	.590 (14.986)	3	28	35	37	43	54	60	65
FA-516-MAA	2.00	100	-	250	300	.590 (14.986)	3	21	27	31	37	48	60	65
FA-526-MAA	0.50	200	125	1000	600	.590 (14.986)	3	10	16	19	25	36	55	65

1 Insertion loss measurements shall be made under full load over the frequency range of 1.0 MHz to 10 MHz. Insertion loss measurements above this frequency range under no load.

2 The insertion loss requirements between any two adjacent specified frequencies shall be that of the lower of the two frequencies in order to accommodate resonant dips.

\* Part numbers were previously specified as "FC 5XX-MXX" and have been amended to "FA" in lieu of "FC". FC part numbers were designated for Z5U dielectric material for the ceramic discoidal element and WEMS does not use this unstable material in any of our catalog filters or any custom filters.